



Tea Valley View

House Type

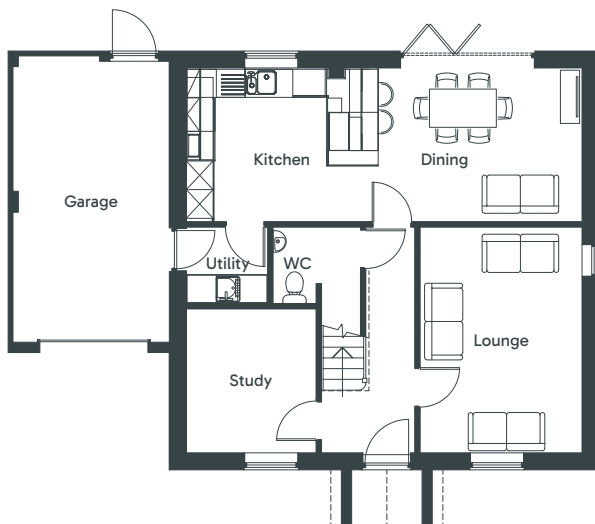
Warwick

 Four bedrooms

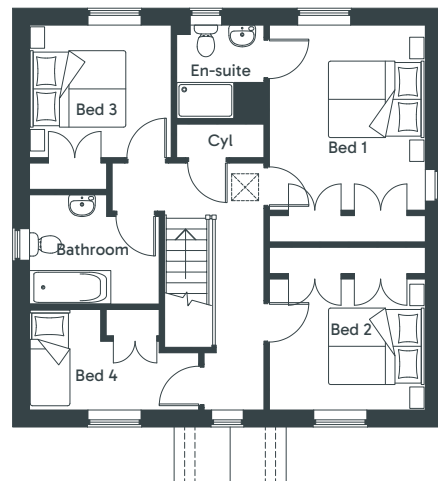


- Master bedroom with en-suite
- Fitted wardrobes
- Private study for focus and creativity
- Open-plan kitchen and dining, perfect for entertaining
- Spacious living area
- Attached garage for easy access and storage

Ground Floor



First Floor



Please note: No side window to Plots 6 and 9

Kitchen/Dining	8.28m x 3.21m	/	27' 2" x 10' 7"
Lounge	3.38m x 4.72m	/	11' 2" x 15' 6"
Study	2.71m x 3.01m	/	8' 10" x 9' 10"
Utility	1.70m x 1.59m	/	5' 7" x 5' 3"
Cloaks (WC)	1.82m x 1.59m	/	6' 0" x 5' 3"
Garage	3.26m x 5.99m	/	10' 8" x 19' 8"

Bed 1	3.26m x 3.87m*	/	10' 8" x 12' 8"
En-suite	1.82m x 1.96m	/	6' 0" x 6' 5"
Bed 2	3.26m x 2.74m*	/	10' 8" x 9' 0"
Bed 3	2.96m x 2.77m	/	9' 9" x 9' 1"
Bed 4	3.54m Max x 2.10m	/	11' 8" Max x 6' 10"
Bathroom	2.71m x 2.28m	/	8' 10" x 7' 6"

* Plus Wardrobes

