




# Tean Valley View

House Type

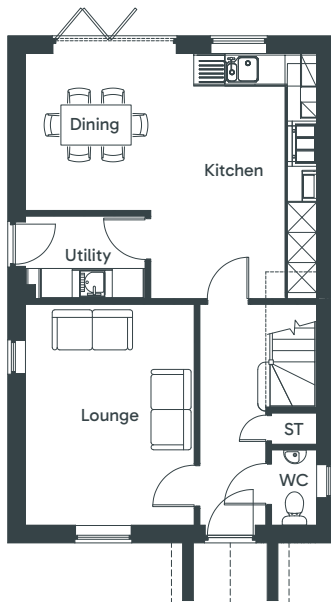
## Beeston

 Four bedrooms

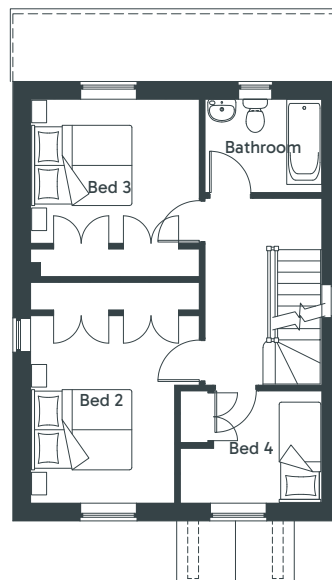


- Master bedroom with en-suite
- Fitted wardrobes
- Open-plan kitchen and dining area
- Large living space designed for comfort

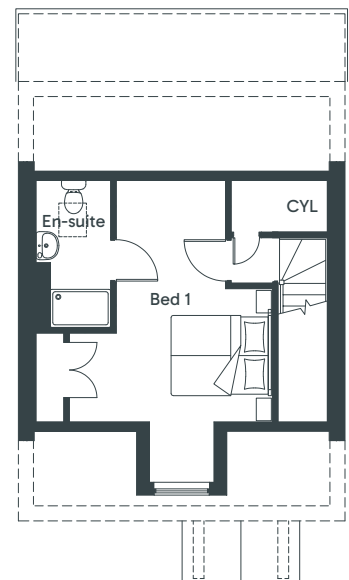
Ground Floor



First Floor



Second Floor



<b>Kitchen/Dining</b>	5.80m x 4.88m Max 19' 1" x 16' 1" Max
<b>Lounge</b>	3.36m x 4.40m 11' 1" x 14' 5"
<b>Utility</b>	2.38m x 1.64m 7' 10" x 5' 4"
<b>Cloaks (WC)</b>	0.90m x 1.50m 3' 0" x 5' 0"

<b>Bed 2</b>	3.36m Max x 3.73m 11' 1" Max x 12' 3"
<b>Bed 3</b>	3.36m x 2.87m* 11' 1" x 9' 5"*
<b>Bed 4</b>	2.81m Max x 2.23m 9' 3" Max x 7' 4"
<b>Bathroom</b>	2.32m x 1.85m 7' 8" x 6' 0"

<b>Bed 1</b>	4.04m x 6.01m Max* 13' 3" x 19' 9" Max*
<b>En-suite</b>	1.40m x 2.93m 4' 10" x 9' 8"

\* Plus Wardrobes

