



Tea Valley View

House Type

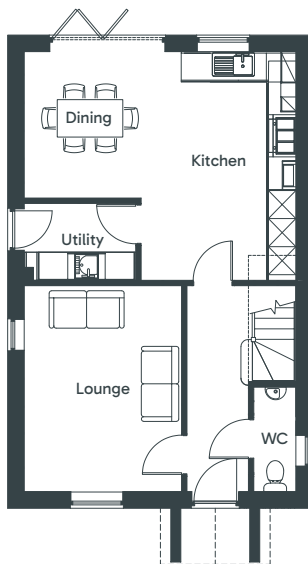
Beeston

 Four bedrooms

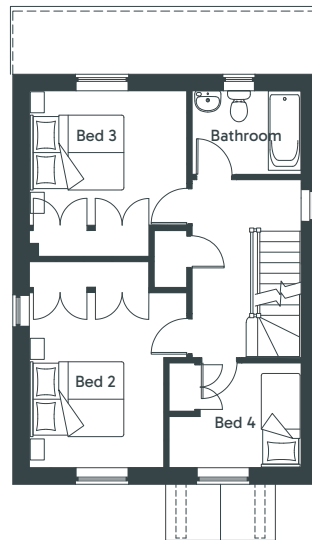


- Open-plan living area, underfloor heating and air source heat pumps for energy-efficient comfort and social connections.
- Luxe master bedroom with high-quality finishes, including fitted wardrobes and oak doors.
- Spacious, contemporary kitchen complete with AEG appliances and quartz worktops.
- Environmentally conscious design featuring B-rated energy efficiency and a 10-year ICW warranty for long-term security.
- Enhanced security with modern electrical accessories and wireless intruder alarm.
- Private, serene outdoor spaces with turfed, fenced gardens, and practical features like an external electrical socket and bib tap.

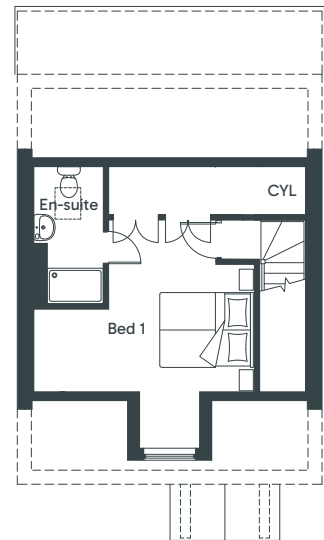
Ground Floor



First Floor



Second Floor



Kitchen/Dining	5.80m x 4.88m Max 19' 1" x 16' 1" Max
Lounge	3.36m x 4.40m 11' 1" x 14' 5"
Utility	2.38m x 1.64m 7' 10" x 5' 4"
Cloaks (WC)	0.90m x 1.50m 3' 0" x 5' 0"

Bed 2	3.36m Max x 3.73m 11' 1" Max x 12' 3"
Bed 3	3.36m x 2.87m* 11' 1" x 9' 5"*
Bed 4	2.81m Max x 2.23m 9' 3" Max x 7' 4"
Bathroom	2.32m x 1.85m 7' 8" x 6' 0"

Bed 1	4.04m x 6.01m Max* 13' 3" x 19' 9" Max*
En-suite	1.40m x 2.93m 4' 10" x 9' 8"

* Plus Wardrobes

